

---

# University of Wisconsin-Stevens Point

Course Syllabus



---

## Division of Interior Architecture

College of Professional Studies

### IA 217 Interior Architecture I

2016 SEM II, Spring Semester

**Meeting Time:** **Tuesdays and Thursdays.** Section 1 at 9:00 – 11:00 and Section 2 at 12:00 – 14:00.

Section 1 Exam Time: Wednesday, May 18, 12:30-14:30.

Section 2 Exam Time: Tuesday, May 17, 8:00-10:00.

**Location:** Room 304 CPS.

**Instructor:** Dr. Kathe Julin, [kjulin@uwsp.edu](mailto:kjulin@uwsp.edu); Office – 302 CPS.

Office hours, Wednesday 10 am – 12 noon, Thursday 2-3 pm or by appointment.

#### UW-Stevens Point Catalog Course Description:

3 credits. Analyze human and environmental factors used to create supportive space for human activity; develop a design methodology. Lecture/studio. Prerequisites: IA 101 and IA 104.

#### Textbook and Readings:

Two Rental for University Bookstore: *Interior Design – A Survey* by Binggeli and *Drawing and Designing with Confidence* by Mike Lin.

One Purchase text at the University Bookstore: *The Brand of You* by Aga Artka and Jenny Rebholz.

#### Course Requirements:

Minimum recommended computer and internet configurations for hybrid/online courses can be found [here](#) on the University of Wisconsin – Stevens Point D2L System Check website: <http://www.uwsp.edu/d2l/Pages/requirements.aspx>.

#### Course Structure:

This course uses the online course management system D2L for course materials, such as the syllabus and news updates along with some readings and resources. You will use your UWSP account to login to the course from the [D2L Login Page](#). If you have not activated your UWSP account, please visit the [Manage Your Account](#) page to do so. To access this course on D2L you will need access to the Internet and a supported Web browser (Internet Explorer, Chrome, Firefox, Safari). To ensure that you are using the recommended personal computer configurations, please refer to the [D2L settings link](#).

In D2L, you will access online lessons, course materials, and resources.

Course Activities for the class include: Two major design projects: 4 Phases each (Airport Café, Work/Live Space in New York City) - 80%, Small class assignments with weekly reflections in a design notebook - 10%, Four Interior Design Professional Development Participation Activities (4 different events/venues) - 10%.

#### Technical Assistance:

If you need technical assistance at any time during the course or to report a problem with D2L you can:

- Visit with a [Student Technology Tutor](#)
- Seek assistance from the [HELP Desk](#)

**Important Note:** This syllabus, along with course assignments and due dates, are subject to change. It is the student's responsibility to check D2L for corrections or updates to the syllabus. Any changes will be clearly noted

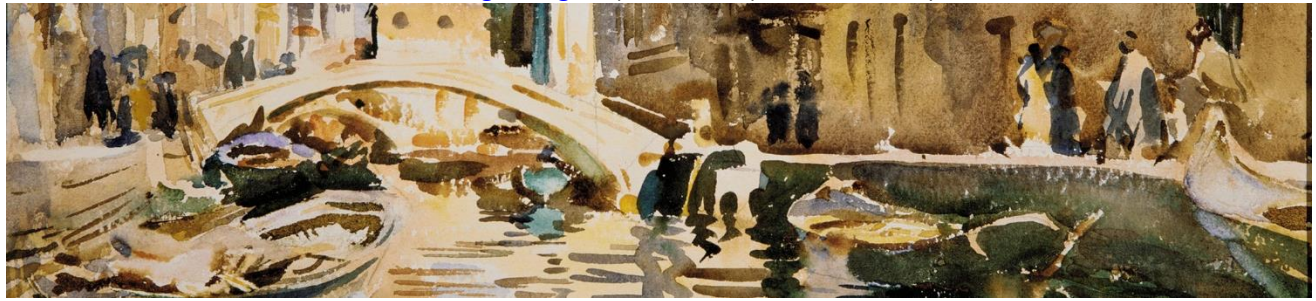
**GOOD IDEAS CAN  
COME AT ANY TIME,  
SO ALWAYS HAVE A  
PENCIL TO HAND.**

---

in a course announcement and/or through email.

*"You can't do sketches enough. Sketch everything and keep your curiosity fresh."*

**John Singer Sargent** (1856 - 1925) American artist)



### **IA 217 Interior Architecture I Course Learning Outcomes.**

Upon completion of this course, students will have achieved the following student learning expectations for this course. As evidence of an understanding of the design process and methodology, student work demonstrates:

1. Exposure to contemporary issues and professionalism affecting Interior Design as a field of study and practice.
2. Opportunity to solve simple design problems, using design methodology and the analysis of human and environmental factors.
3. Identify and define relevant aspects of a design problem (goals, objectives, performance criteria) and gather, evaluate, and apply appropriate and necessary information and research findings to solve the problem (pre-design investigation).
4. Synthesize information and generate multiple concepts and a design response to the programmatic requirements (design drawings).
5. Ability to select, interpret, and apply appropriate anthropometric data.
6. Ability to apply federal, state, and local codes; standards; and accessibility guidelines at an introductory level.
7. Demonstrate creative thinking through presentation of a variety of ideas, approaches, and concepts (in a design process packet).

CIDA Standards that are integrated into the IA 217 Interior Architecture I Course Learning Outcomes.

[CIDA Professional Standards 2017](#). Section II Knowledge Acquisition and Application.

CIDA Standard 7. Human-Centered Design.

Standard 7e. Student work demonstrates the ability to apply human factors and ergonomics to design solutions.

CIDA Standard 8. Design Process.

Standard 8a. Student work demonstrates the ability to apply space planning techniques throughout the design process (bubble diagrams and block planning, space allocation, circulation studies).

Student work demonstrates the ability to apply knowledge and skills learned to:

Standard 8c. Identify and define issues relevant to the design problem.

Standard 8d. Execute the design process: pre-design, schematic design, and design development.

Standard 8e. Synthesize information to generate evidenced-based design solutions.

Standard 8f. Explore and iterate multiple ideas.

Standard 8g. Design original and creative solutions.

Standard 8h. Students understand the importance of evaluating the relevance and reliability of information and research impacting design solutions.

CIDA Standard 9. Communication.

Students are able to effectively:

Standard 9a. Express ideas in oral communication.

Standard 9c. Express ideas in written communication.

Standard 9d. Express ideas developed in the design process through visual media: ideation drawings/sketches.

Standard 9e. Apply a variety of communication techniques and technologies appropriate to purpose/audience.

CIDA Standard 11. Design Elements and Principles.

Standard 11a. Students understand elements and principles of design, including spatial definition/organization.

Students effectively apply the elements and principles of design to:

---

Standard 11c. Two-dimensional design solutions.  
Standard 11d. Three-dimensional design solutions.

CIDA Standard 12. Light and Color.

Student work demonstrates understanding of:

Standard 12g. Color terminology

Standard 12h. Color principles, theories, and systems.

Standard 12i. Color in relation to materials, textures, light, and form.

Students work demonstrates the ability to appropriately:

Standard 12j. Select and apply color to support design concepts.

Standard 12k. Select and apply color to multiple design functions (composition, historical precedence, market).

Standard 12 l. Use color solutions across different modes of design communication.

CIDA Standards that are integrated into the IA 217 Interior Architecture I Course Learning Outcomes. (CONTINUED)

[CIDA Professional Standards 2017](#). Section II Knowledge Acquisition and Application.

CIDA Standard 13. Products and Materials.

Standard 13a. Students are aware of the influence of furnishings, objects, materials, and finishes on human wellbeing.

Student work demonstrates understanding of:

Standard 13b. How furnishings, objects, materials and finishes work together to support the design intent.

Standard 13d. Appropriate design or specification of products and materials in relation to project criteria and human wellbeing (including safety, health, comfort, as well as psychological wellness).

Standard 13e. Students select and apply products and materials on the basis of their properties and performance criteria, including ergonomics, environmental attributes, life safety, and life cycle cost.

Standard 13f. Students are able to lay out, design, and specify a broad range of appropriate products, materials, objects, and elements in support of the design intent.

CIDA Standard 16. Regulations and Guidelines.

Standard 16a. Students have an awareness of the origins and intent of laws, codes, and standards (that impact health, wellness, security, and fire and life safety).

Students apply:

Standard 16i. Federal, state/provincial, and local codes and guidelines (IBC).

Standard 16j. Barrier-free and accessibility regulations and guidelines (ADA).

### **Methods of Instruction and Evaluation:**

PowerPoint lectures, videos, D2L website discussions, readings and website explorations of architectural and applied design associations/organizations, articles, and research around the world. Readings provide in-depth examination and illustration of section topics.

Course Conduct Expectations:

- Academic professionalism, in class and online.
- Proper Netiquette should be followed for this course.
- Feedback on all projects will be given online in a variety of areas - the discussion area along with student comments on the same projects and in the comment area of the D2L Dropbox and in Course Grades. Instructor feedback will be given each week as assignments are completed in a timely manner.
- Policy on late assignments and/or extra credit. No late assignments will be accepted for any reason, except in the case of excused emergencies (see Absences below). All work must be complete for full consideration of points; however, if it is not complete by the due date and time, always turn in what you have finished at the required due date time for some possible points.

**Attendance and Absences.** Attendance in terms of participation with all class lectures, discussions, and careful reading of requirements is expected, see UWSP [catalog](#) requirements on attendance. You should participate online in this class regularly, listen and read carefully, take notes, and participate in any required discussions.

**Special Arrangements.** If you need extra time or special arrangements for taking exams because of a learning disability, be sure to go to the Disability Services Office and get an authorization form. Then make sure to present it to the

---

instructor during the first few days of class. See the university webpage for more information on disabilities and accommodations: <http://www.uwsp.edu/disability/Pages/default.aspx>.

**Academic Integrity.** While you are encouraged to study with your colleagues, we expect you to work individually on any assignment. This means that the entire project, including drafts, revisions, and final short essay papers must be executed solely by you. The work you present must be your own (not a copy of someone else’s paper or drawing). For more information, see the University website on [grade review procedures](http://www.uwsp.edu/dos/Documents/CommunityRights.pdf) and for academic integrity and student rights, see <http://www.uwsp.edu/dos/Documents/CommunityRights.pdf>. Please consult the UW-Stevens Point Dean of Students webpage on Student Concerns for additional information: <http://www.uwsp.edu/dos/Pages/Academic-Concerns%20for%20Students.aspx>

**Grading Policies**

- Description of projects and grading criteria and/or rubric for each type of assignment – given with each.
- Viewing Grades in D2L. Points you receive for graded projects will be posted to the D2L gradebook.
- Final Course Letter grades will be given according to the following percentages of Total Points at end of semester: 100-93%=A; 92-90%=A –; 89-87%=B+; 86-83%=B; 82-80%=B –; 79-77%=C+; 76-73%=C; 72-70%=C –; 69-67%=D+; 66-63%=D.
- Proper [Netiquette](#) should be followed for this course. Also see book on [Core Rules of Netiquette](#).

See UW-Stevens Point Emergency Management Plan at [www.uwsp.edu/rmgt](http://www.uwsp.edu/rmgt) for details on all emergency responses while on campus at UW-Stevens Point.”

**Graded Course Activities**

Visit the **Projects** menu in D2L Content area for details about each project listed.

% of Grade	Description
80%	2 Major Design Projects: Airport Café, Work/Live Space -NYC (Phases I-IV)
10%	Small class assignments and Design Notebook-notes and weekly reflections
10%	Four Interior Design Professional Development Participation Activities.
<b>100%</b>	<b>Total</b>

**Late Work Policy**

Be sure to pay close attention to deadlines—there will be no make-up projects or late work accepted without a serious and compelling reason and instructor approval.

**Viewing Grades in D2L**

Points you receive for graded activities will be posted to the D2L Grade Book. Click on the Grades link to view your points.







## IA 217 Interior Architecture I – COURSE CALENDAR

Course Schedule						
WEEK	DATE	TOPIC			Readings	
Week 1	January 26/28	Interior Design as a Career How Designers Work			Ch. 1 Binggeli	
Week 2	February 2/4	Phase I. Airport Café. Design Process. Principles of Good Graphics Bubble Diagram			Ch. 2, 13 Binggeli Ch. 5 and 9 Lin	
Week 3	February 9/11	Project 1. Airport Café. Establish the Program. Phase I. Brand of You.			Ch. 14, 15, 21 Binggeli Ch. 1-5 Artka/Rebholz	
Week 4	February 16/18	Phase II. Set up Bubble Diagrams. Concept Development			Ch. 16 Binggeli Ch. 6 - 7 Artka/Rebholz	
Week 5	February 23/25	Phase II. Design Approach and Alternative Solutions			Ch. 17 Binggeli	
Week 6	March 1/3	Phase III. Design Development Drawings			Ch. 18 Binggeli	
Week 7	March 8/10	Phase IV. Design Solution – Final Drawings on Vellum			Ch. 2 Artka/Rebholz	
Week 8	March 15/17	Phase IV. Presentation			Ch. 8 Artka/Rebholz	
	<b>Spring Break</b>	<b>March 19 - 27</b>				
Week 9	March 29/31	Perspectives and Rendering Techniques. Brand of You. Project 2. Phase I. Programming.			Mike Lin Text.	
Week 10	April 5/7	Project 2. <a href="#">Printing House West Village</a> Work/Live Space in New York City. Establish the Program.				
Week 11	April 12/14	Phase II. Set up Bubble Diagrams. Concept Development				
Week 12	April 19/21	Phase II. Design Approach and Alternative Solutions				
Week 13	April 26/28	Phase III. Design Development Drawings				
Week 14	May 3/5	Phase IV. Design Solution – Final Drawings vellum Four Participation Activities due in notebook.				
Week 15	May 10/12	Studio Presentations Design Notebook Review (log of notes/sketches)			Ch. 4 and 5, Artka and Rebholz.	
Week 16	EXAMS	Phase IV. Presentations. Brand of You. Academic Career map.				
Academic Resources		<a href="#">Current List of Classes (Timetable) Grade Review</a>	<a href="#">Transfer Information Transcript Requests</a>	<a href="#">General Education Program (GEP)</a>	<a href="#">University Library Tutoring &amp; Learning Center</a>	<a href="#">UWSP Course Catalog</a> <a href="#">Academic Advising</a> <a href="#">Disability Services</a>



John Singer Sargent – watercolor sketch of a Venetian café on the Riva degli Schiavoni, the waterfront promenade that is next to Palazzo Ducale, Italy.